



## Company Profile & Activities in India

# About KDDI India

## ■ Brief Profile

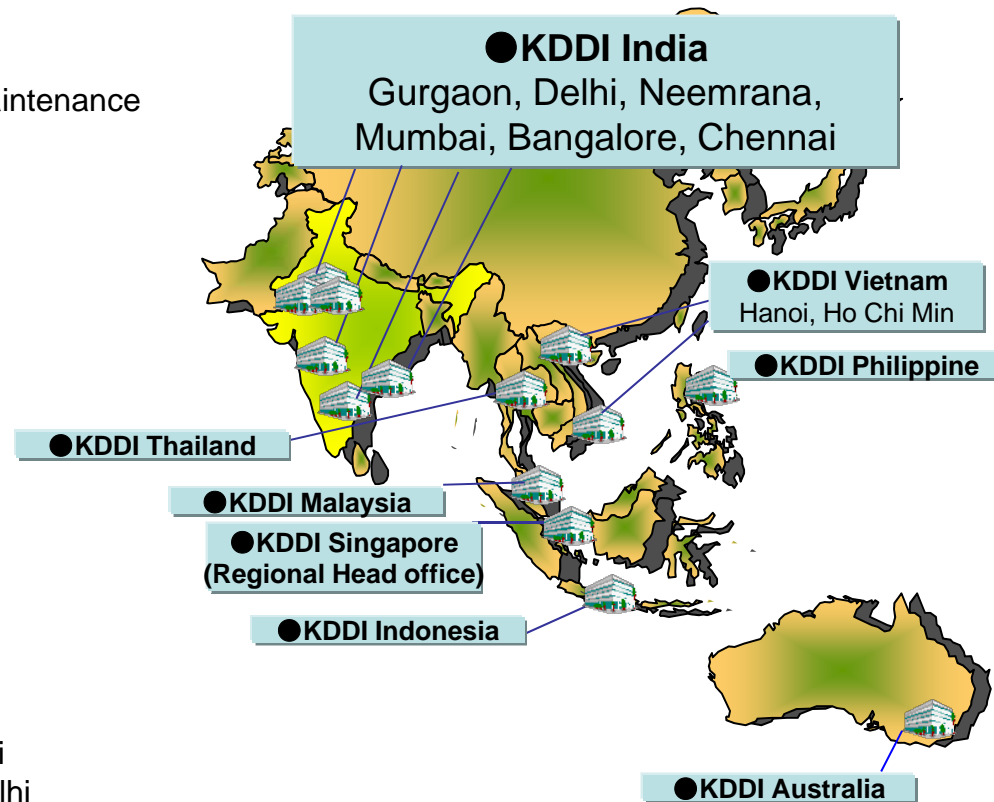
- Company Name : KDDI India Private Limited
- Established Date: Sep 2007
- Services:
  - IT infrastructure, Networking, System Integration, Maintenance
  - Data Center
  - Coordination for Indian Domestic Network
- Location: Gurgaon(HQ), Delhi(Registered Office), Mumbai, Bangalore, Chennai, Neemrana
- Representative: Katsuya Nishimori (Managing Director)
- Shareholder: KDDI Singapore 100%

## ■ Staff (as of June 2015)

- Total 75 (Details: 9 Japanese, 66 Indian)
  - ※ Recruiting more staff

## ■ History

- Jan 2004 Started International circuit support in India in collaboration with Indofuji (an IT company)
- Jul 2006 Opened KDDI Singapore Liaison office in Delhi
- Sep 2007 Established KDDI India Private Limited in Delhi
- Jan 2008 Opened Mumbai and Bangalore branch offices
- Apr 2009 Opened Chennai branch office
- Jun 2010 Shifted office from New Delhi to Gurgaon
- Jun 2010 Opened Registered Office in New Delhi
- Jun 2010 Opened Neemrana branch office

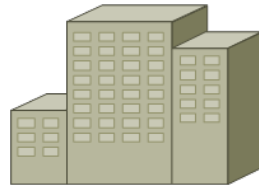


South East Asia Block

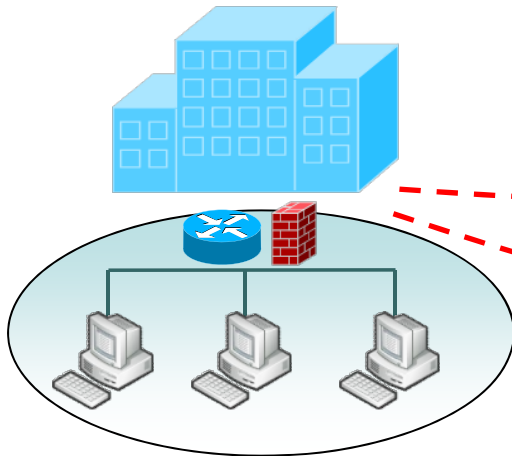
# ICT Solutions by KDDI India

KDDI Group provides End to End ICT solutions

<Customer HQ in Japan>

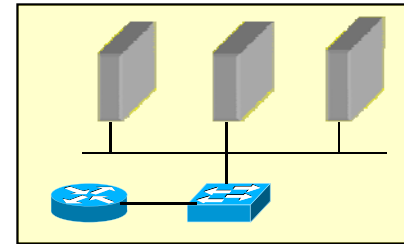


<Customer Indian Branch>



**SI/DC/NW**  
**Total End to End Solutions**

<KDDI India Data Center>



## Networks

- International IP-VPN
- KDDI IP-VPN/ NNI VPN
- International IPLC / ATM
- Bilateral Service with Indian telecom
- Indian Domestic Network/Internet Coordination

## Data Center

- Data Center service
- Hosting / Co-location
- Disaster Recovery
- Managed Service
- Network operation / maintenance
- Network Monitoring

## IT Infrastructure

- WAN/LAN designing, installation
- Server, Client solution
- Voice solution, Security Solution
- Office Relocation, TV conference
- Equipment Maintenance, support
- Resident IT Engineer

# ICT Solutions by KDDI India

KDDI India will provide best solution based on its relationship with Telecom provider/IT Vendor

## Network

- International Network  
Partnership with Sify, TATA Communications, BT Infonet etc.
- Domestic Network in India  
Partnership with Sify, BSNL, Reliance, Airtel, Tulip etc.

**TATA COMMUNICATIONS**  
TAKING YOU FARTHER™

**BT**  **Infonet**

**sify** **TULIP**<sup>®</sup>  
making it possible

  
...HARAT SANCHAR NIGAM LTD.

  
**Reliance**  
Infocomm

**Airtel**  
Express Yourself

## Data Center

- Data Center services  
Partnership with Sify, Reliance, Airtel and Tulip.

**sify**

  
**Reliance**  
Infocomm

**Airtel**  
Express Yourself

**TULIP**<sup>®</sup>  
making it possible

## IT Infrastructure

- SI Solutions  
Alliances with various IT vendors(Partial list)  
Fujitsu, Wipro, Cisco, HP, IBM, Toshiba, Buffalo,  
Panasonic, Canon, Sharp, Ricoh etc.

**Panasonic**  
ideas for life

**BUFFALO**<sup>™</sup>

**FUJITSU**

**TOSHIBA**  
Leading Innovation >>>

**RICOH** **Canon** **CASIO** **JVC**

  
**CISCO**



**IBM**



 **McAfee**<sup>®</sup>



 **Adobe**

  
**Symantec**

# ICT Solutions by KDDI India

## Feature and achievement of KDDI India SI Service

### ❖ **IT Infrastructure Services**

- Sale, Design and Installation for LAN, PC/Server, Security Product
- Sale, Design and Installation for WAN, PBX (Including IP, TV Conference Systems)
- Deployment and Migration for New office/factory or relocation
- Project Management, Consultation, Coordination for Telecom/ISP service application
- Resident IT Engineers
- Maintenance Support and Help desk Support etc.

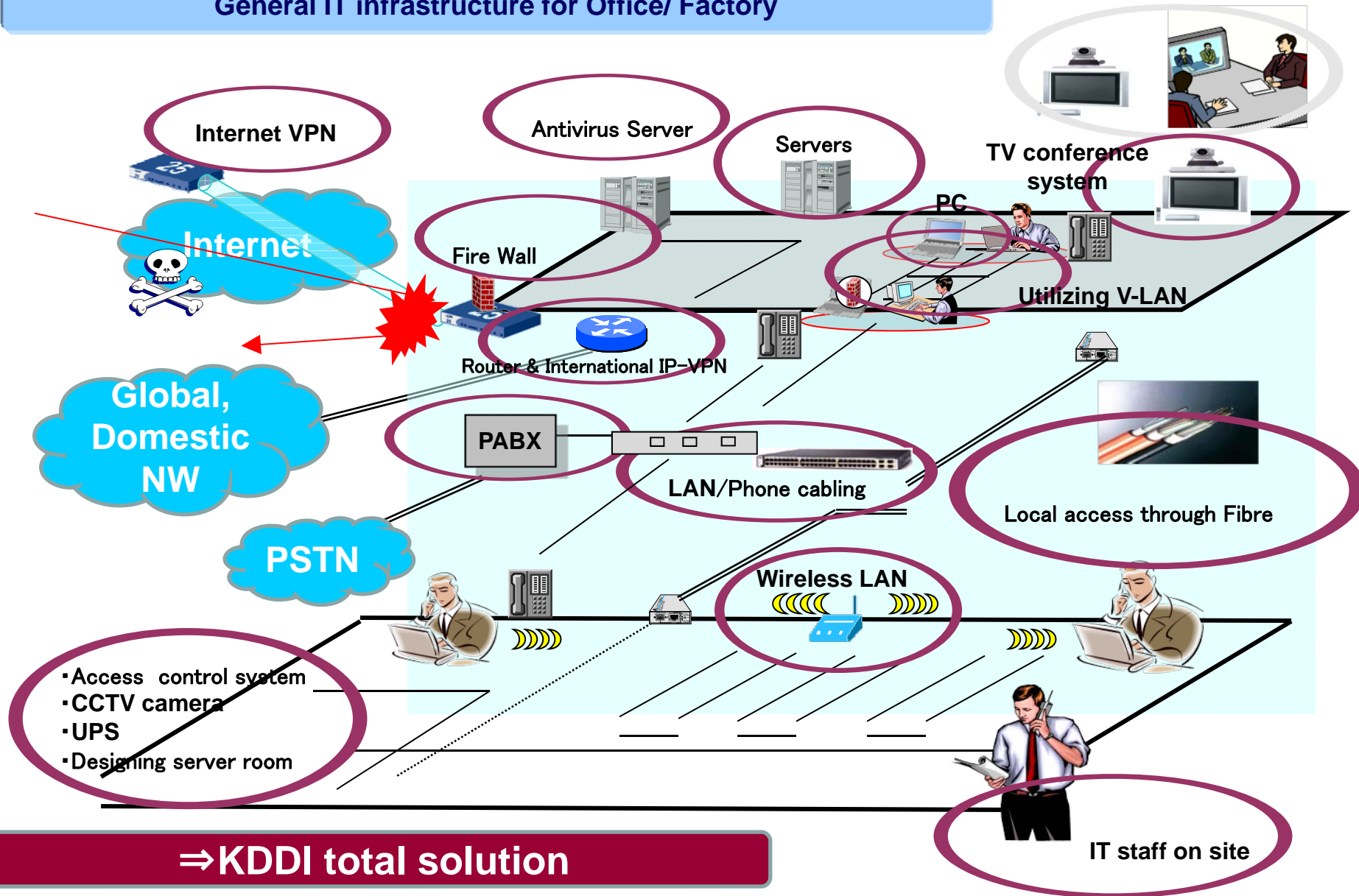
- ❖ We will form a project team for providing high quality services. The team will comprise of Japanese and IT certified Indian engineers having requisite technical skills. The team will also ensure smooth project execution by communicating with customers in both Japanese and English language for fulfilling customer satisfaction.

### ❖ **Best-of-Breed Technology Alliances:**

Fujitsu, Toshiba, Buffalo, Ricoh, Canon, Sharp, Panasonic, JVC, Cisco, Juniper, HP, IBM, Symantec, MacAfee, Microsoft, Watch Guard, IBM, Dell, VMware, Veam etc.

# ICT Solutions by KDDI India

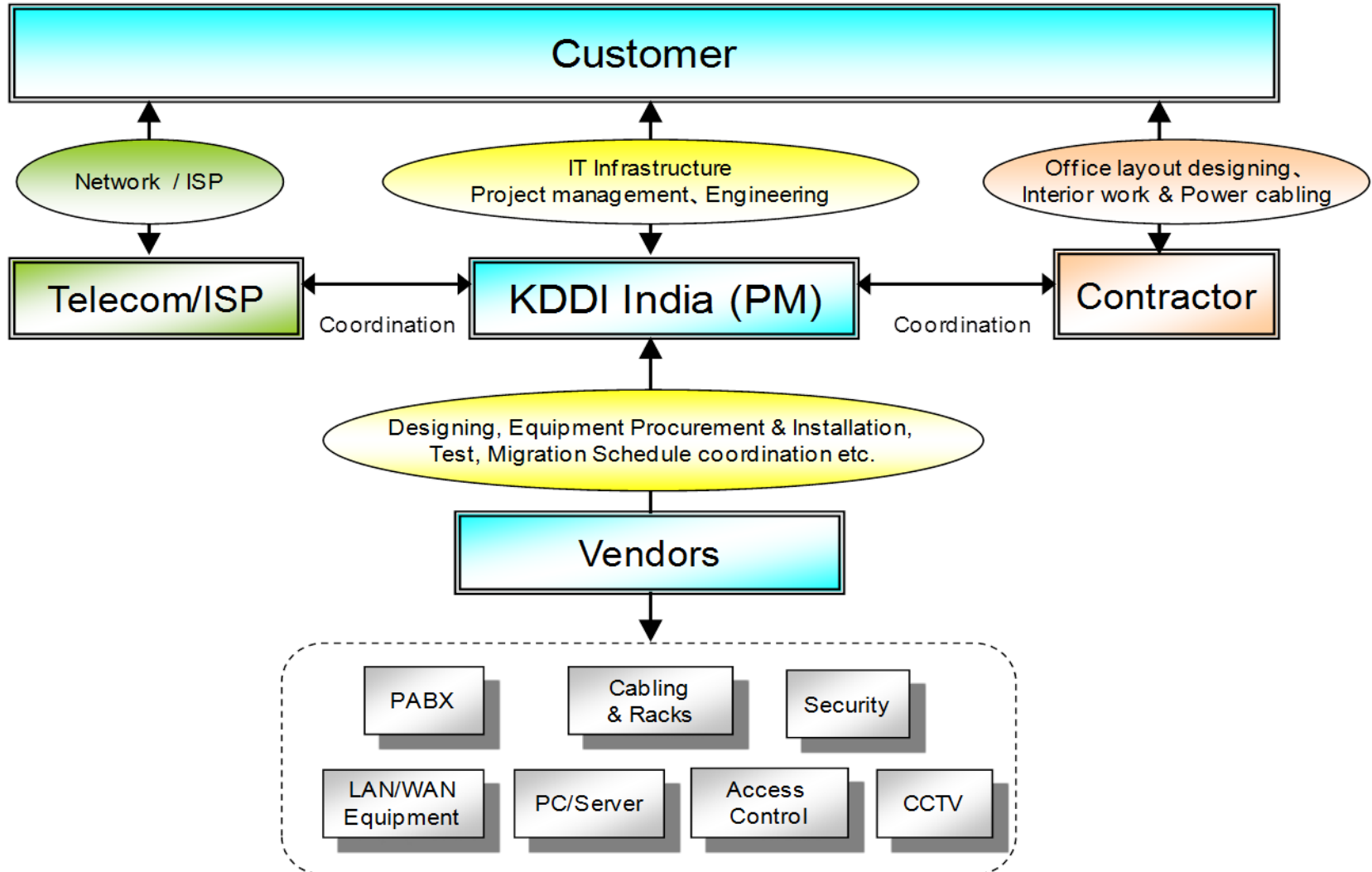
## General IT infrastructure for Office/ Factory



⇒ KDDI total solution

# ICT Solutions by KDDI India

## General Project Framework



# Maintenance and Operation

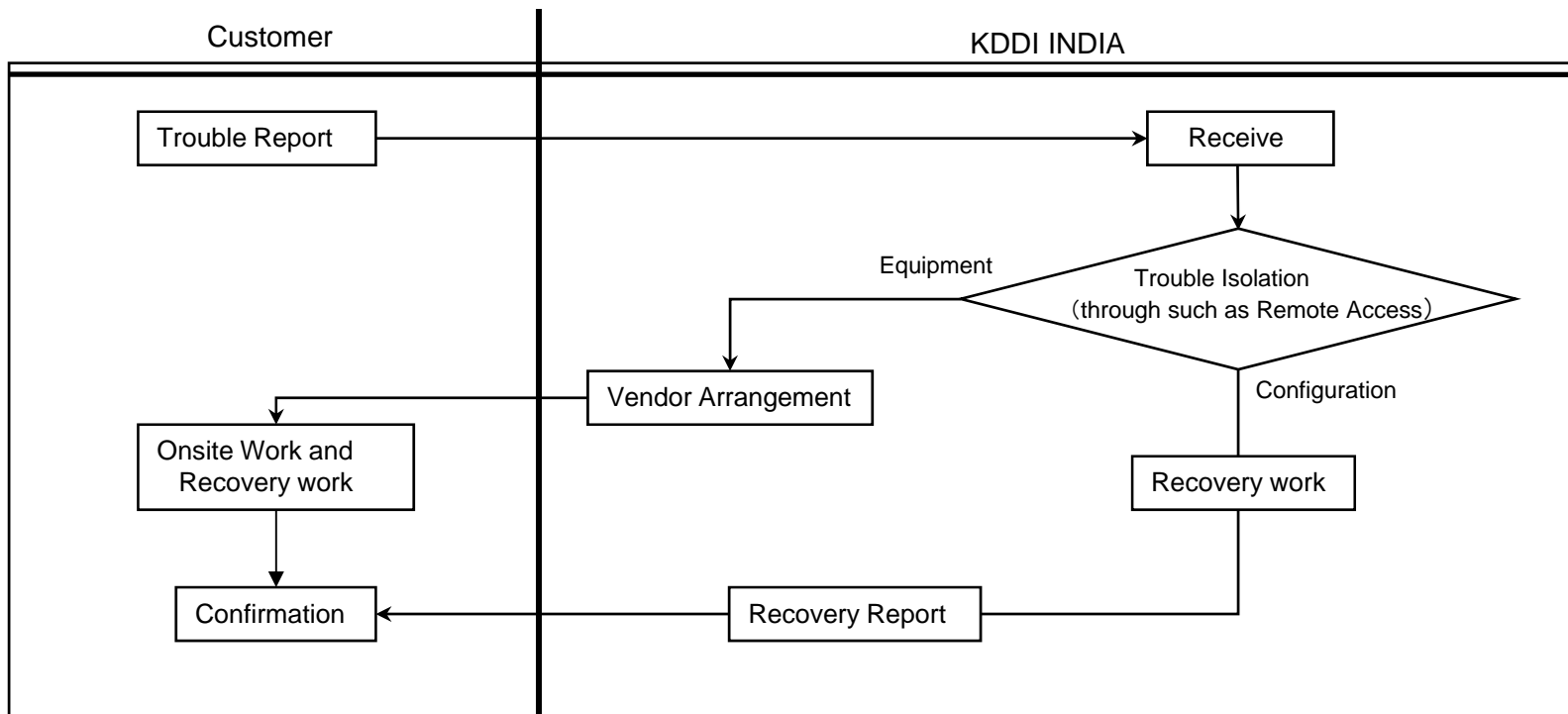
## KDDI Maintenance Flow

The maintenance service is provided as per the customer's requirement.

KDDI India follows the procedure for trouble shooting as mentioned below.

■ KDDI Normal working hours : Weekdays 09:00~17:00 (Mon~Fri, except Public holidays)

■ Response Time : Within 4 hours





# Maintenance and Operation

## IT Engineer outsourcing

### ◆ Resident IT Engineer

- KDDI dispatches IT engineer to the client site, who takes care of customer's IT Infrastructure.
- KDDI has the experience of providing outsourced Resident Engineers for many customers

#### Advantage

- Reduce Training and Personal management cost
- Avoid risk for sick leave of IT manager
- Avoid risk for personal exchange
- Guarantee IT service quality by KDDI India

# KDDI India's Contacts

**KDDI India Private Limited**

**(HQ)**

404-406, 4th Floor, JMD Regent Square, M.G. Road,  
Gurgaon, Haryana, India 122 002

TEL: +91-124-496-4700 FAX: +91-124-496-4749

[sales@kddi.co.in](mailto:sales@kddi.co.in)

**(Delhi Registered Office)**

106 Ground Floor, World Trade Centre,  
Barakhamba Lane, New Delhi, India 110001

[sales@kddi.co.in](mailto:sales@kddi.co.in)

**(Neemrana Branch)**

A-020, Ashiana Green Hills, Neemrana, District Alwar,  
Rajasthan, India 301705

[sales@kddi.co.in](mailto:sales@kddi.co.in)

**(Mumbai Branch)**

Rm1202, Level-1, Trade Centre, Bandra Kurla  
Complex, Bandra(E), Mumbai - 400 051

TEL : +91-22-30604535/36 FAX : +91-22-30604540

[sales@kddi.co.in](mailto:sales@kddi.co.in)

**(Bangalore Branch)**

#6/A, Amit Plaza, 1<sup>st</sup> Floor, 3rd Phase, J.P. Nagar,  
Bannerghatta Road, Bangalore, India 560078

TEL : +91-80-4907-6638 FAX : +91-80-4907-6639

[sales@kddi.co.in](mailto:sales@kddi.co.in)

**(Chennai Branch)**

KDDI India Private Limited,

Regus Shyamala Gardens, #315, 3rd Floor, Shyamala Towers,  
No. 136, Arcot Road, Saligramam, Chennai - 600093

TEL : +91-44-4221-8188 FAX : +91-44-4221-8029

[sales@kddi.co.in](mailto:sales@kddi.co.in)